



+ Workplace Matting Systems

Safety. Quality. **transfloor**[®]
aktivmatten



GEGGUS[®]

FACTS & FIGURES



Our 60 employees

at GEGGUS GROUP will meet any requirements concerning the shape, design, and quality of matting systems – within only a couple of days.



Over 70 years

Three generations of the GEGGUS family have been manufacturing matting systems since 1947.



Service

Upon request, we will accurately install our matting systems onsite. This is our service for you!



REACH regulation: compliant

We do not use any substances that adversely affect human health. Our workplace matting systems are thus compliant with the REACH regulation that is in force in all EU member states (EC Regulation no. 1907/2006).



Quick delivery

We process your order, including tailor-made products, and ship it within no more than five days!



Quality



Our matting systems are primarily produced at our site in Germany.



German Brand Award



GEGGUS have received the 2017 German Brand Award, honouring the company's stringent corporate design.



Environmentally friendly production

The solar panels on the roofs of our production sites are generating 105 kW of solar energy, covering ca. 35 percent of our current energy demand.



facebook

Find us on facebook at:
www.facebook.com/geggus.de



GEGGUS Main Site in Weingarten, Germany

SAFER WORKPLACES WITH GEGGUS

GEGGUS has developed an impressive variety of products since the foundation of the family-run business in 1947. Our premium-quality TRANSFLOOR mats have an attractive design and make sense from an economic point of view. TRANSFLOOR mats make workplaces safer and provide many health-related benefits: Thanks to their ergonomic design, the mats help to reduce fatigue and to make employees feel safe and comfortable at the workplace.

TRANSFLOOR workplace mats provide comprehensive solutions for safer workplaces in multiple industries and trades – from assembly lines to laboratories, to sales counters in food trade or retail, to commercial buildings and recreational facilities.

Whether a new building or workplace infrastructure is planned or existing workplaces are modernised – TRANSFLOOR mats may be installed in short time, also as part of subsequent measures. They will fit literally anywhere thanks to standardised sizes and flexible installation options.

GEGGUS has represented the state-of-the-art in optimising workplaces for three generations, contributing to a healthier, safer, and more ergonomic way of working. We meet all market requirements, from REACH, to fire protection, to electrostatic discharge (ESD).

Please find more information about GEGGUS TRANSFLOOR mats on the following pages.

CONTENT

WORKPLACE MATTING SYSTEMS TRANSFLOOR



1.

BISON WOODEN SAFETY FOOT GRID

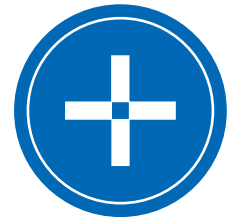
Test Reports · Certificates	12
BISON	15
BISON Impregnated Version	17
BISON BRUSH	19
BISON CROSS	21
BISON – Variants and Types	22
BISON – Special Shapes	23



2.

NATURAL RUBBER WORKPLACE MATS

WALK CUSTOM-MADE VERSIONS	26
WALK / WALK EXTRA	27
HUSKY	28
STEINBOCK	29
PUMA / PUMA EXTRA	30
LUCHS	31
PANDA	32
OKTOPUS	33
GEKKO	34



3.

ALL-PURPOSE WORKPLACE MATS

SALAMANDER	37
KOLIBRI	39



transfloor®
aktivmatten





MUSCULOSKELETAL DISORDERS

are closely related to physical stress
at the workplace.

[...]

Due to the high socio-political impact
of musculoskeletal disorders,

**PREVENTION AT THE WORKPLACE
IS ESSENTIAL.**

Source: F. Liebers, G. Caffier: Profession-Specific Work Incapability Resulting from
Musculoskeletal Disorders in Germany (Berufsspezifische Arbeitsunfähigkeit durch
Muskel-Skelett-Erkrankungen in Deutschland)

Study of the Federal Health Institute for Occupational Safety and Health, www.baua.de

PREVENTION AT THE WORKPLACE

Musculoskeletal disorders are the most common reason for absent days due to work incapability. Every year, 10% of employees under 20 years, and even approx. 29% of employees aged 60 to 65, have sickness absences because of work incapability. Pain in the back is the most frequent diagnosis.

In particular employees working in manufacturing or technical industries have a high risk of becoming incapable of working as the result of back pain. New cases as well as worsening of pre-existing conditions can be attributed to stress at the workplace. In addition to work incapability, pain in the back also has impact on coordination, mobility, strength, and fitness – all of which has a negative effect on work performance. *



Healthy employees are one of the key factors for a successful company. Highest quality demands can only be met if absences, drop-outs, and accidents can be reduced or prevented. In addition, work incapability and early retirement can be very expensive for employers – which is just one more reason for paying extraordinary attention to prevention measures. In particular when it comes to tasks that are typically performed standing, physical stress should be minimised. Employees performing these tasks will confirm the benefits of ergonomic flooring and matting. GEGGUS workplace mats support safety and posture, thereby improving work performance, reducing the amount of sickness absences, and increasing productivity.

* Source: Dr. med. Falk Liebers and Dr. sc. Med. Gustav Caffier: Profession-Specific Work Incapability Resulting from Musculoskeletal Disorders in German. Dortmund / Berlin / Dresden 2009; Federal Health Institute for Occupational Safety and Health.

THIS IS WHAT OUR CUSTOMERS SAY



KEVIN KEMPF
Executive Management KEMPF-Group,
Kraichtal

For us, the most important factors for choosing GEGGUS were reliable delivery, tailored customer consulting, and product quality. We equipped the workplaces at our high-quality TRUMPF CNC machines with new workplace mats made of PU. Some workstations were equipped with standard-size mats, but for several workplaces, GEGGUS produced special shapes according to our requirements. Our employees are very happy about the highly ergonomic mats. What is more, the company union [BG] also very much supported this measure improving workplace quality, because it helped to increase general staff satisfaction.



UWE KEMM
Lebenshilfe Bruchsal,
Head of Construction Department

Little by little, we have installed TRANSFLOOR mats at all our workstations. This helps us to reduce physical stress for employees who perform tasks that require standing for long periods and to minimise the risk of short- or long-term aches and job-related health issues. We benefit from fewer absence days and reduced non-wage labour costs, so investing in this prevention measure was a good decision.



TORSTEN EHLGÖTZ
Managing Director Ehlgötz GmbH,
Karlsruhe

We use the hand-made BISON CROSS safety foot grids. Following an electronic measuring, a computer-aided design of the grids was done. The customized grids were then manufactured according to our requirements, including cut-outs as well as diagonal and circular cuttings, and installed by GEGGUS – a true single-source service! We are totally happy with the entire project, from consulting to accurate installation. We recommend the TRANSFLOOR mats without reservation for equipping workstations.

10 GOOD REASONS FOR TRANSFLOOR MATS

Fit for Work!

- 1** SIGNIFICANT REDUCTION OF STRESS ON MUSCLES, JOINTS, AND THE SPINE
- 2** ANTI-SLIP PROPERTIES SUPPORT ACCIDENT PREVENTION
- 3** PREVENT FATIGUE AND PROTECT AGAINST COLD AND HEAT
- 4** USABLE IN DRY AND HUMID AREAS
- 5** PROTECTION OF HIGH-QUALITY INDUSTRIAL FLOORS AND REDUCTION OF NOISE
- 6** WORKPLACES BECOME MORE ATTRACTIVE
- 7** CONTRIBUTE TO CLEAN AND HYGIENIC WORKPLACES
- 8** MULTIPLE SOLUTIONS FOR MANY DIFFERENT AREAS OF USE
- 9** SUPPORT OF WORKFLOWS AND PROCESSES WITH SIGNS AND SYMBOLS
- 10** CURRENT WORK SAFETY STANDARDS ARE MET



1

BISON WOODEN FOOT GRIDS

- 12 Test Reports · Certificates
- 15 BISON Safety Foot Grid
- 17 BISON Safety Foot Grid,
Waterproof Version
- 19 BISON BRUSH Safety Foot Grid
- 21 BISON CROSS Safety Foot Grid
- 22 BISON Versions and Types
- 23 BISON Special Shapes

BISON WOODEN FOOT GRIDS – TESTED SAFETY

Ergonomisches Produkt

Prüfzertifikat

Die Interessengemeinschaft der Rückenschullehrer/innen e.V. bescheinigt eine erfolgreiche Prüfung.

GEGGUS GmbH
Höhefeldstraße 56-60
76356 Weingarten (Baden)

Holzlaufrost Bison

Die Prüfung durch die Interessengemeinschaft der Rückenschullehrer/innen e.V. (IGR e.V.) bestätigt die Gebrauchstauglichkeit und Ergonomie des Produktes. Die Tests orientierten sich an den Vorgaben der DIN 33 419 / EN ISO 15537. Die Untersuchung überprüfte den Anpassungsgrad des Produktes an die körperlichen Eigenschaften der Testpersonen.



IGR e.V. – Vorstand

Nürnberg, den 08.02.2017

TEST CERTIFICATE FOR SAFETY FOOT GRID TYPE BISON / PRODUCT WITH ERGONOMIC DESIGN


The "Back Therapy Coaches Interest Group" (Interessengemeinschaft der Rückenschullehrer / Innen e.V.) is a community in Germany that promotes the slogan "Making your back stronger". The community brings together professionals from the areas of physiotherapy, physical education, medicine, and health organisations.

Our safety foot grid BISON was approved as a product with outstanding ergonomic usability according to DIN33419 / EN ISO 15537.



DGUV TEST CERTIFICATE FOR SAFETY FOOT GRID TYPE BISON / ANTI-SLIP PROPERTIES

The Institute for Occupational Safety and Health at the German Statutory Accident Insurance (Deutsche Gesetzliche Unfallversicherung) tested the anti-slip properties of the new safety foot grid with brushes according to DIN 51130 and ASR A1.5 / 1.2 and awarded an R11/ V10 rating. This rating means that the new safety foot grids with brushes are particularly well suited for usage in work areas where there is an increased risk of slipping.



Materialprüfung und Entwicklung GmbH & Co. KG
 Geschäftsführer: Jens Hellberg
 Artlenburger Landstraße 39 - 41
 21365 Adendorf
 Tel.: +49 4131 88 43 947
 Fax: +49 4131 88 43 948
 Email: hellberg@mpi-pruefinstitut.de
 Internet: www.mpi-pruefinstitut.de

Prüfzeugnis Nr.: 12 7650 - S / 15

Datum: 04.03.2016
Seite 1 von 2

Auftraggeber: GEGGUS GmbH
Höbelfeldstraße 56-60
76356 Weingarten
Deutschland

Bauvorhaben: n.n.

Auftrag vom: 16.02.2016

Art der Prüfung: Einzelprüfung der rutschhemmenden Eigenschaft nach DIN 51130, Stand 02.2014.

Prüfmaterial:
 Probenahme: durch AG zugesandtes Prüfmaterial

Handelsübliche Bezeichnung: Sicherheits-Holzlaufrost mit Bürsten
 (gemäß Angaben des Auftraggebers) Typ: Holzlaufrost Transfloor AM® Bison mit Bürsten

Abmessungen Prüfkörper: 100 x 50 cm (Länge x Breite)
 (nach DIN / BGR 181)

Oberfläche: Bürstenbesetzte Holzleisten mit offenen Zwischenräumen
 Prüfrichtung quer zur Laufrichtung der Holzleisten

Die Seiten 1 und 2 des Prüfzeugnisses enthalten das Gesamtergebnis der Prüfung, sie dürfen nur ungekürzt veröffentlicht werden.

MPI Materialprüfung und Entwicklung GmbH & Co. KG – Artlenburger Landstraße 39 - 41 – 21365 Adendorf
 Telefon: 0 41 31 – 88 43 947 / Telefax: 0 41 31 – 88 43 948 / Email: hellberg@mpi-pruefinstitut.de
 HRA 202130, AG Lüneburg, Geschäftsführer Jens Hellberg – St.-Nr.: 33/211/05596 – Ust.-Id.-Nr.: DE 815520433
 Volksbank Lüneburger Heide, BLZ: 240 60 300 / Kto.-: 85 36 56 4600 / IBAN: DE36 2406 0300 8536 2646 00 / BIC: GENODEF330

MPI TEST CERTIFICATE FOR SAFETY FOOT GRID TYPE BISON

The company MPI Material Testing and Development GmbH & Co. KG conducts tests that are in step with actual practice, e.g. the "incline" test. All tests are performed according to DIN 51130. The BISON BRUSH safety foot grid achieved a brilliant result in the MPI test and received the R12 / V10 category.



INSTITUT FÜR FURBEREICH- UND RAUMGEOMETRIE
 INSTITUT FÜR FURBEREICH- UND RAUMGEOMETRIE
 INSTITUT FÜR FURBEREICH- UND RAUMGEOMETRIE

PRÜFBERICHT

Nr. 5526-07-2017-PR

Auftraggeber: GEGGUS GmbH
76356 Weingarten

Beitrag: Bericht über die Prüfung eines Sicherheits-Holzlaufrostes hinsichtlich des elektrostatischen Verhaltens in Anlehnung an DIN EN 1815 "Elastische und Leinwand-Bürstenbürste – Nachprüfung des elektrostatischen Verhaltens", Deutsche Fassung EN 1815:2011-12

Antragsteller: Dipl.-Ingenieur Kai Geggus, namens und im Auftrag der GEGGUS GmbH D-76356 Weingarten

Sicherheits-Holzlaufrost: Transfloor AM® BISON in einer abklemmbaren Leistenlänge 70 cm Laufrichtung 250 cm

Datum: 13.07.2017

Ausfertiger:	3
Beurteilung:	B
Anlagen:	Protokollspezifikationen



INSTITUT FÜR FURBEREICH- UND RAUMGEOMETRIE

IFR TEST REPORT FOR SAFETY FOOT GRID TYPE BISON / ELECTROSTATIC PERFORMANCE

The institute for floor and room configuration IFR has assessed the electrostatic performance for elastic flooring according to DIN EN 1815. The assessment clearly confirmed that the BISON safety foot grid has anti-static properties. The value was significantly below the generally acknowledged perception threshold of less than 2,000 V.



BISON



APPLICATION AREA

Regular version for general usage

SPECIFICATIONS

- Colour of laths: natural
- Material: kiln-dried beechwood, bedded on elastic rubber pads
- Connection: stainless steel rope V2A, 2 mm thick
- Intervals: Rubber pads at intervals of ca. 13 mm
- Cap: threaded rod with brass hex head screws
- Height: ca. 35 mm and ca. 45 mm; ca. 13 kg / m²
- Length of laths: 80, 100, 120 and 150 cm; width ca. 80 mm
- Available in any desired length, if applicable multi-part.
- Special shapes on request.
- Upon request, ramped edges on the short sides or chamfered edges on the long sides are available. Yellow safety strips are optional.

PROPERTIES

- Made of kiln-dried beechwood. Grooved wood laths reduce the risk of slipping.
- Protection of high-quality industrial flooring
- Metal or wood shavings may trickle through profiles.
- Oil-, petrol-, and acid-resistant rubber pads support the legs, spine, and muscles of employees

- Thermal and static isolation
- Workplaces become more attractive and safer
- Rollable, crush-proof, slip-resistant, ergonomic, and non-warp

DURABILITY

Resistant to most oils and chemicals.
Temperature-resistant from -30° to 90° Celsius

ANTI-SLIP PROPERTIES

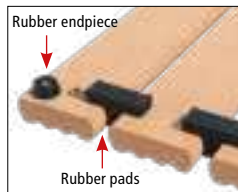
Tested by the Institute for Occupational Safety and Health regarding slip resistance (R11) and displacement area (V10).

CLEANING

The wood laths can be brushed easily and quickly.
Cleaning of workstations may be done very simply by rolling up the mats; if applicable, clean via stream of water.



UPPER SIDE



LOWER SIDE

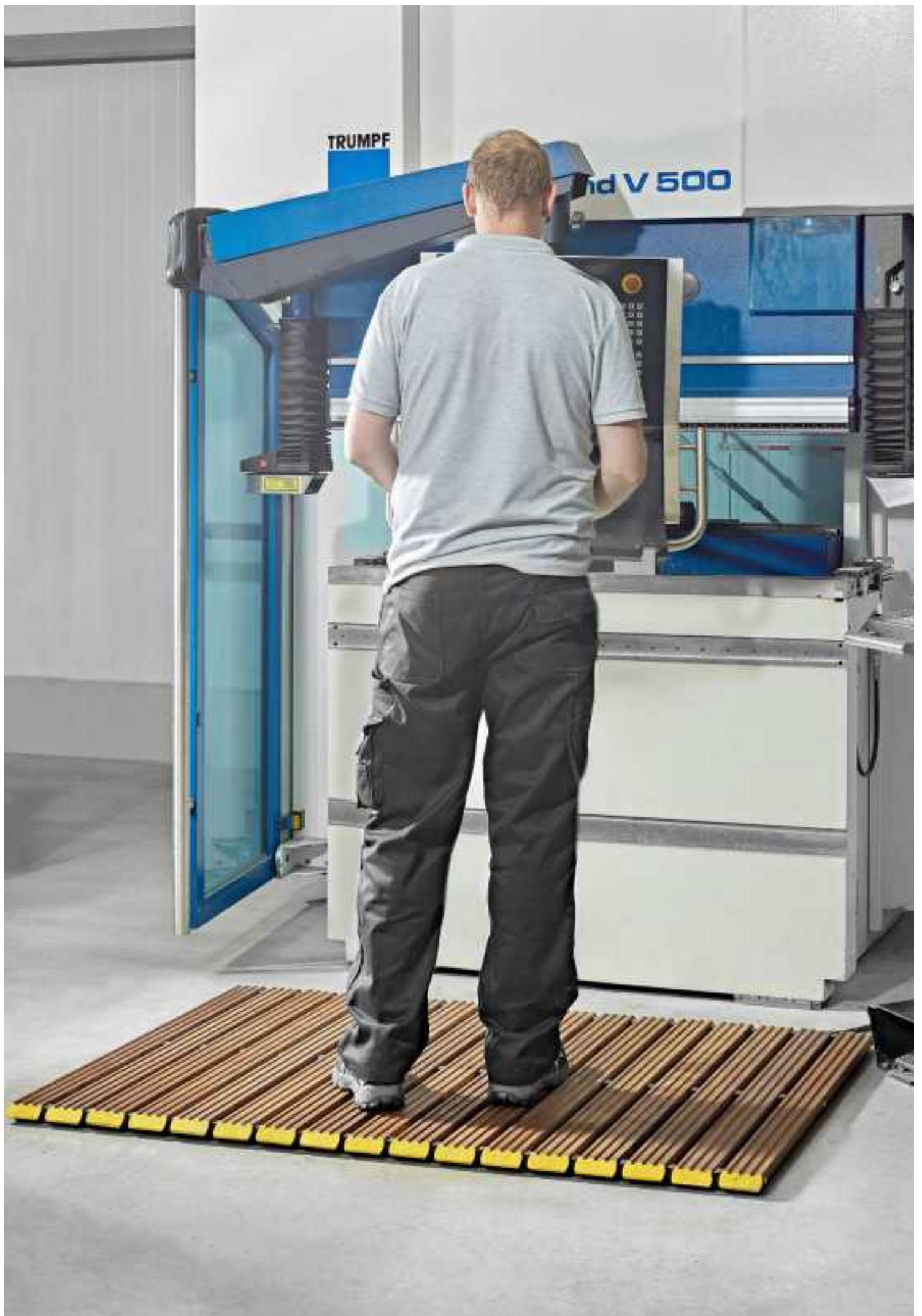


ROLLABLE



TRUMPF

nd V 500



BISON WATER-PROOF VERSION



APPLICATION AREA

We recommend this BISON version for workplaces where machine tools and machining centres operate. Upon request and at an extra charge, the wood profiles may be waterproofed in a dip tank. Treatment with a wood preservation agent will increase the safety foot grid's water repellency, making this BISON version most suitable for areas where **oil and cooling lubricants are used** and at workstations where large amounts of dirt have to be dealt with. The water-proof version may also be equipped with ramped edges, yellow safety strips, and special connectors. Available in 35 and 45 mm height.

SPECIFICATIONS

- The beechwood laths are waterproofed using an environmentally-friendly pressure impregnation technique.
- Hydrophobic impregnation in a vessel reduces water and oil absorption.
- Colour of laths: dark brown
- Material: kiln-dried beechwood, bedded on elastic rubber pads
- Connection: stainless steel rope V2A, 3 mm thick
- Intervals: Rubber pads at intervals of ca. 13 mm
- Cap: threaded rod with brass hex head screws
- Height: ca. 35 mm and ca. 45 mm; ca. 13 kg / m²
- Length of laths: 80, 100, 120 and 150 cm; width ca. 80 mm
- Available in any desired length, if applicable multi-part.
- Special shapes on enquiry.
- Upon request, ramped edges on the short sides or chamfered edges on the long sides are available. Yellow safety strips are optional.

- Oil-, petrol-, and acid-resistant rubber pads support the legs, spine, and muscles of employees
- Thermal and static isolation
- Workplaces become more attractive and safer
- Rollable, crush-proof, slip-resistant, ergonomic, and non-warp

DURABILITY

Resistant to most oils and chemicals. Special treatment of the wood increases resistance to liquids and dirt. Temperature-resistant from -30° to 90° Celsius

ANTI-SLIP PROPERTIES

Tested by the Institute for Occupational Safety and Health regarding slip resistance (R11) and displacement area (V10).

PROPERTIES

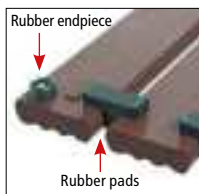
- Made of stained beechwood. Grooved wood laths reduce the risk of slipping.
- Protection of high-quality industrial flooring
- Metal or wood shavings may trickle through profiles.

CLEANING

The wood laths can be brushed easily and quickly. Cleaning of workstations may be done very simply by rolling up the mats; if applicable, clean via stream of water.



UPPER SIDE



LOWER SIDE



ROLLABLE



CABLE AND HOSE ROUTING





BISON BRUSH



APPLICATION AREA

Recommended for dry application areas. Universal machining. Brushes embedded in the beechwood laths provide an increased stand and optimum cleaning performance, e.g. when mats are accessed with heavy safety boots.

SPECIFICATIONS

- Beechwood laths with brushes.
- Brushes made of extremely durable nylon 6.6
- Colour of brushes: black. Colour of laths: natural
- Material: kiln-dried beechwood, bedded on elastic rubber pads
- Connection: stainless steel rope V2A, 3 mm thick
- Intervals: Rubber pads at intervals of ca. 13 mm
- Cap: threaded rod with brass hex head screws
- Height: ca. 35 mm and ca. 45 mm; ca. 13 kg / m²
- Length of laths: 80 or 100 cm; width ca. 80 mm
- Available in any desired length, if applicable multi-part.
- Special shapes on enquiry.
- Upon request, ramped edges on the short sides or chamfered edges on the long sides are available. Yellow safety strips are optional.

PROPERTIES

- Made of dried beechwood. Grooved wood laths and brushes reduce the risk of slipping significantly.
- Protection of high-quality industrial flooring
- Metal or wood shavings may trickle through profiles.

- Oil-, petrol-, and acid-resistant rubber pads support the legs, spine, and muscles of employees
- Thermal and static isolation
- Workplaces become more attractive and safer
- Rollable, crush-proof, slip-resistant, ergonomic, and non-warp

DURABILITY

Resistant to most oils and chemicals.
Temperature-resistant from -30° to 90° Celsius

ANTI-SLIP PROPERTIES

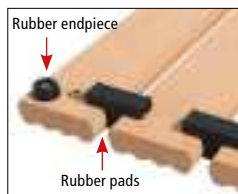
Tested by MPI – Material Testing and Development GmbH & Co. KG regarding anti-slip properties (R12) and displacement area (V10).

CLEANING

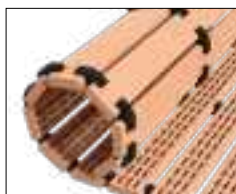
The wood laths can be brushed easily and quickly.
Cleaning of workstations may be done very simply by rolling up the mats; if applicable, clean via stream of water.



UPPER SIDE



LOWER SIDE



ROLLABLE

Prüfzeugnis Nr. 12 7650-S/15
Bewertungsgruppe Rutschhemmung **R12**
Bewertungsgruppe Verdrängungsraum **V10**



Materialprüfung und Entwicklung GmbH & Co. KG
Verantwortlich für die Richtigkeit der Angaben: GEGGUS GmbH

Zertifiziert von



Wie stärken Ihren Rücken
Interessengemeinschaft der
Rückenschullehrer/innen e.V.
www.igr-ev.de

Ergonomisches Produkt



BISON CROSS



APPLICATION AREA

Recommended for dry application areas. Universal machining. Anti-slip profiles provide a safe stand and reduce the risk of skidding.

SPECIFICATIONS

- Additional anti-slip profiles on the upper side
- Colour of laths: natural
- Material: kiln-dried beechwood, bedded on elastic rubber pads
- Connection: stainless steel rope V2A, 3 mm thick
- Intervals: Rubber pads at intervals of ca. 13 mm
- Cap: threaded rod with brass hex head screws
- Height: ca. 35 mm or ca. 45 mm; ca. 13 kg / m²
- Length of laths: 80 or 100 cm; width ca. 80 mm
- Available in any desired length, if applicable multi-part.
- Special shapes on enquiry.
- Upon request, ramped edges on the short sides or chamfered edges on the long sides are available. Yellow safety strips are optional.

PROPERTIES

- Made of dried beechwood. Anti-slip profiles provide safe accessibility.
- Protection of high-quality industrial flooring
- Metal or wood shavings may trickle through profiles.
- Oil-, petrol-, and acid-resistant rubber pads support the legs, spine, and muscles of employees
- Thermal and static isolation
- Workplaces become more attractive and safer
- Rollable, crush-proof, slip-resistant, ergonomic, and non-warp

DURABILITY

Resistant to most oils and chemicals. Increased resistance to liquids and dirt thanks to special treatment of the wood used.
Temperature-resistant from -30° to 90° Celsius

ANTI-SLIP PROPERTIES

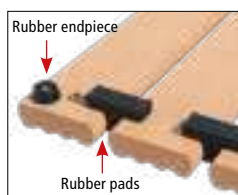
Tested by MPI – Material Testing and Development GmbH & Co. KG regarding anti-slip properties (R12) and displacement area (V10).

CLEANING

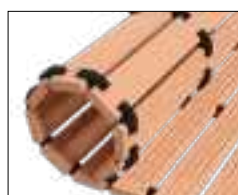
The wood laths can be brushed easily and quickly.
Cleaning of workstations may be done very simply by rolling up the mats; if applicable, clean via stream of water.



UPPER SIDE



LOWER SIDE



ROLLABLE

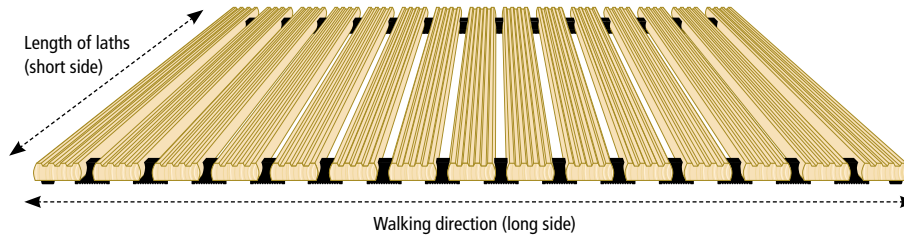


BISON VARIANTS / TYPES

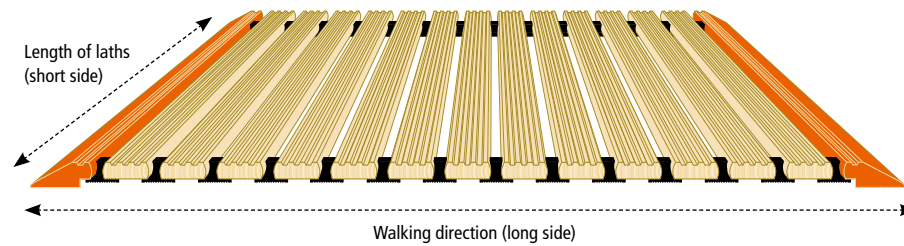
APPLICATION AREA

Increase your safety: For the sake of improved accessibility, we may install ramped profiles on the short sides and chamfered edges on the long sides upon request.

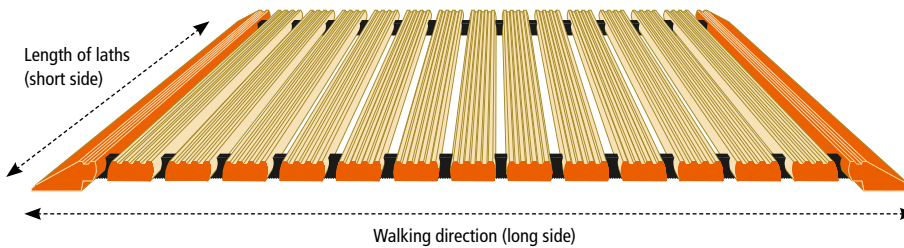
1) STANDARD SPECIFICATIONS, NO RAMPED PROFILES OR CHAMFERED EDGES INCLUDED



2) RAMPED PROFILES ON SHORT SIDES, NO CHAMFERED EDGES ON LONG SIDES



3) RAMPED PROFILES ON SHORT SIDES AND CHAMFERS ON ONE OR BOTH LONG SIDES



AVAILABLE HEIGHTS

Height 35 mm



Height 45 mm



RAMPED PROFILES ON SHORT SIDES

35 mm height, length ca. 110 mm



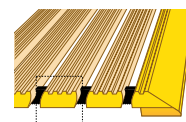
45 mm height, length ca. 120 mm



CHAMFERS – SIGNAL COLOUR



45° chamfers on long sides



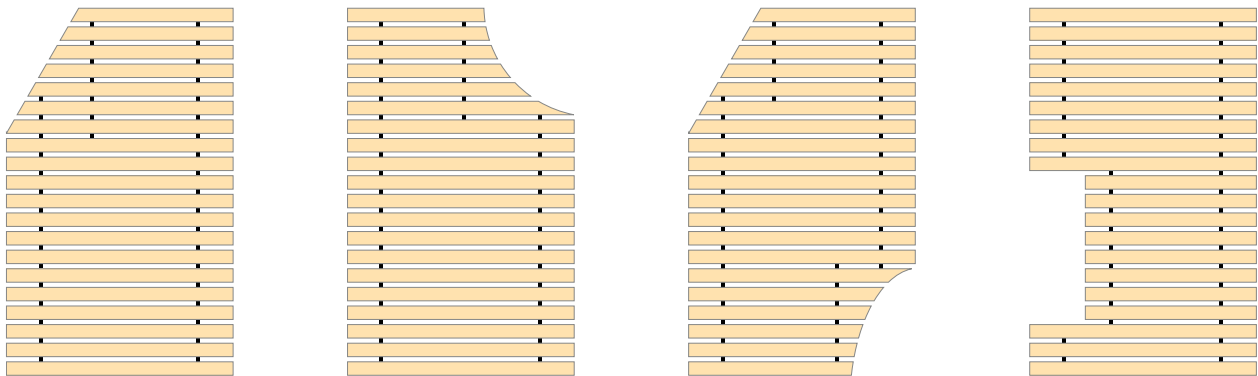
Ramped edges / chamfers in yellow signal colour increase safety. Available for one or several sides.

BISON SPECIAL SHAPES



Any tailor-made shape is available: You provide the exact figures, we produce any shape according to your requirements. Using special connectors, we are able to provide multi-part wood grids. All options regarding colour and accessibility are also available with special shapes. Upon your request, we will provide ramped profiles, chamfered edges, yellow safety labelling, or waterproofing – or any combination.

EXAMPLES OF SPECIAL SHAPES



CONNECTORS FOR BISON SAFETY FOOT GRIDS



Vertical extension (walking direction) via robust brass connectors



Horizontal extension (bar length) via robust brass connectors

Multi-part safety foot grids may be connected via robust connectors (see images) in horizontal or vertical direction. Multi-part safety grids with connectors provide even further increased accessibility and contribute to a consistent appearance of the location. Connectors can simply be disassembled for cleaning and maintenance of safety grids and workplaces. The connectors are available at an extra price.





2

NATURAL RUBBER WORKPLACE MATS

- 26 WALK TAILOR-MADE VARIANTS
- 27 WALK / WALK EXTRA
- 28 HUSKY
- 29 STEINBOCK
- 30 PUMA / PUMA EXTRA
- 31 LUCHS
- 32 PANDA
- 33 OKTOPUS
- 34 GEKKO

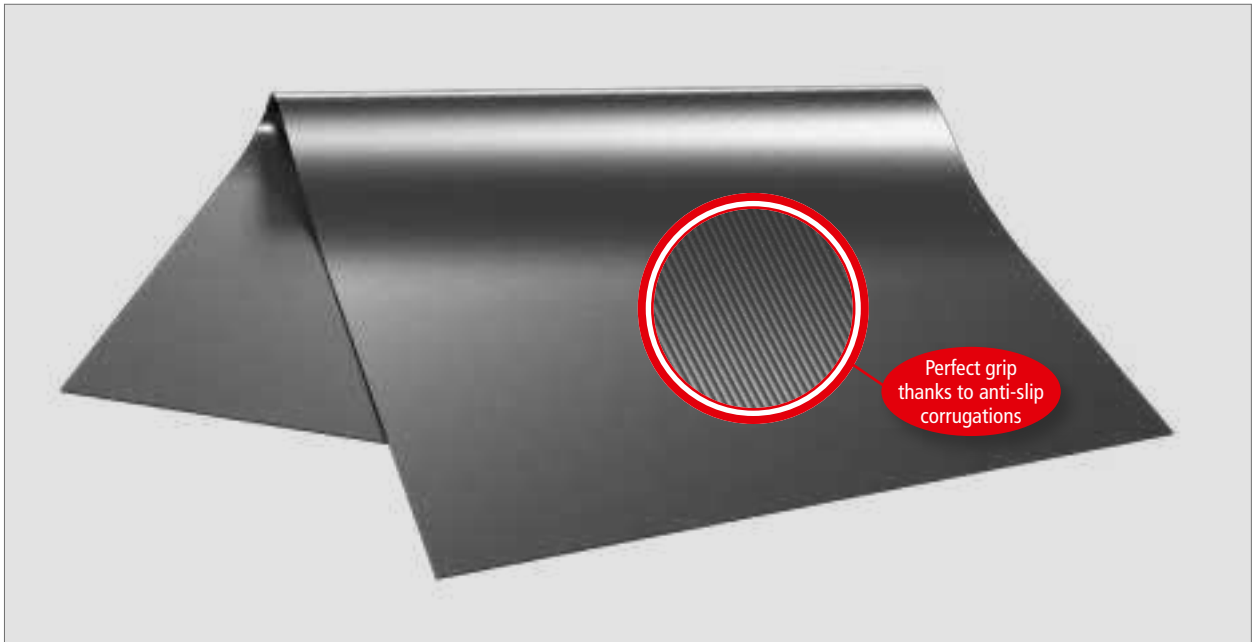
WALK TAILOR-MADE VARIANTS



WALK



ALSO AVAILABLE: WALK EXTRA OIL-RESISTANT VARIANT (25% NBR) WITH 3 MM HEIGHT



APPLICATION AREA

Recommended for car interiors, tool trolleys, workbenches, drawers, and packing tables.

SPECIFICATIONS

- Material WALK: natural rubber (solid rubber)
- Material WALK EXTRA: oil-resistant nitrile rubber (25% NBR), only available in 3 mm height
- Design: closed
- Height: 3 mm = 3.3 kg/m²
4 mm = 4.5 kg/m²
- Colour: black
- Roll: 10x1 m
- Special sizes available as tailor-made variants or stamped parts

PROPERTIES

- Slip-resistant, shock-absorbing, cold-resistant
- Reducing noise and vibrations
- All-purpose application

DURABILITY

All-purpose application (not in areas where oil, fat, chemicals, and acids are used)
WALK EXTRA: oil-resistant variant (nitrile rubber, 25 % NBR): resistant to most oils, fat types, chemicals, and acids; temperature-resistant up to 70° Celsius.

CLEANING

Simple cleaning of workplaces by removing the mat; if applicable, use dry vacuum cleaner.



UPPER SIDE



LOWER SIDE



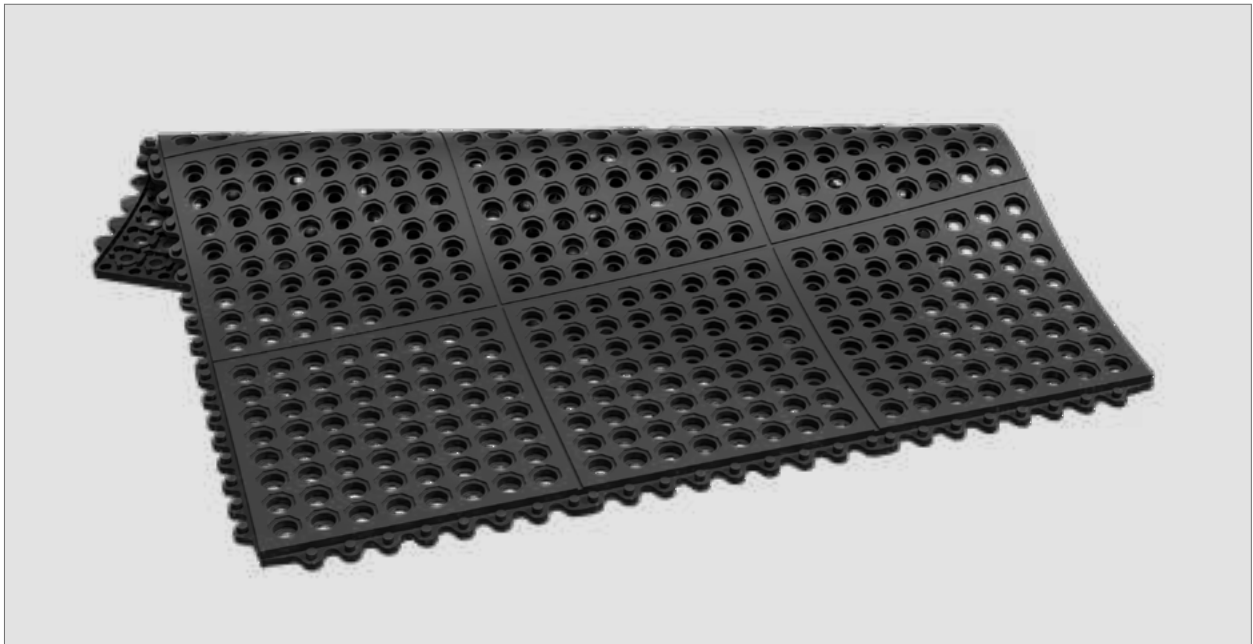
ROLLABLE



SPECIAL SHAPES

2 NATURAL RUBBER WORKPLACE MATS

HUSKY



APPLICATION AREA

The basic set-up of the HUSKY workplace mat equals that of the STEINBOCK workplace mat. The open structure of the mat provides drainage of liquids and absorption of shavings. Suitable for large areas.

SPECIFICATIONS

- Material WALK: natural rubber
- Design: open
- Height: ca. 15 mm
- Colour: black
- Ramped profile: separate ramped profiles (with hole or plug) in a flexible plug-in connection
- Size / Weight:
 - Base plate: ca. 92 x 92 cm, ca. 8 kg / piece,
 - ramped profile: ca. 100 x 8 cm, ca. 1.5 kg / piece

PROPERTIES

- Modular system
- Slip-resistant, shock-absorbing, cold-resistant, impact noise-reducing
- Abrasion-resistant and weather-proof
- Open, alveolar surface. Studded flooring (5 mm height) on the lower side provides optimal water drain and ventilation
- Recyclable

DURABILITY

All-purpose application (not in areas where oil, fat, chemicals, and acids are used)

MODULAR SYSTEM

Flexible plug-in system: expandable in any direction through holes and plugs at the margins of the mat. Flexible area design through square rubber tiles (modular dimension: ca. 31 x 31 cm).

CLEANING

Simple cleaning of workstations by removing the mat; if applicable, use dry vacuum cleaner.



UPPER SIDE



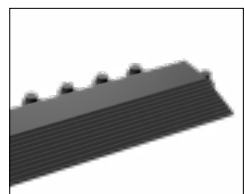
LOWER SIDE



CONNECTION

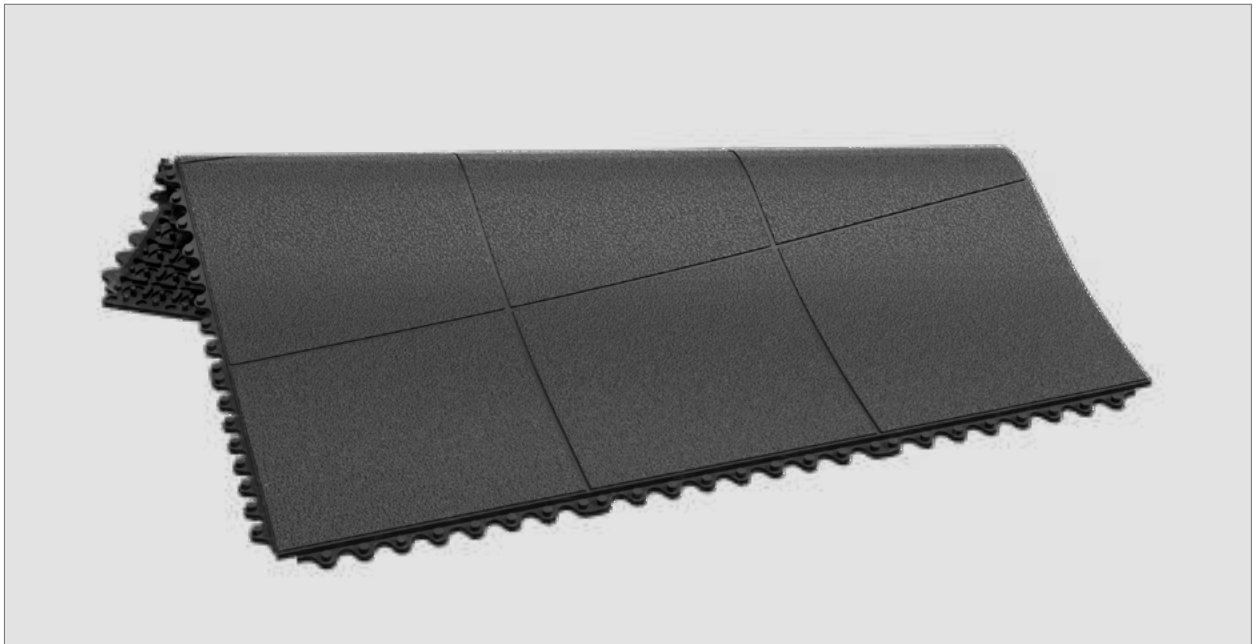


LOWER RAMPED PROFILE



UPPER RAMPED PROFILE

STEINBOCK



APPLICATION AREA

Premium-quality solution for industry workplaces with ambitious requirements. Recommended for large-area workplaces.

SPECIFICATIONS

- Material: natural rubber
- Design: closed
- Height: ca. 15 mm
- Colour: black
- Ramped profile: separate ramped profiles (with hole or plug) in a flexible plug-in connection
- Size / Weight:
Base plate: ca. 92 x 92 cm, ca. 8 kg / piece,
ramped profile: ca. 100 x 8 cm, ca. 1.5 kg / piece

PROPERTIES

- Wear-resistant, anti-slip surface
- Modular system
- Resistant to metal shavings
- Protecting floors and dropped tools
- Closed surface with tile pattern (5 mm nubs) on the lower side
- Mat is not resting directly on the floor due to underneath nubs
- Recyclable

DURABILITY

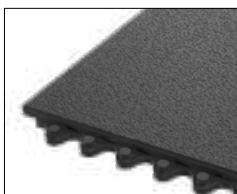
All-purpose application (not in areas where oil, fat, chemicals, and acids are used)

MODULAR SYSTEM

Flexible plug-in system: expandable in any direction through holes and plugs at the margins of the mat. Flexible area design through square rubber tiles (modular dimension: ca. 31 x 31 cm).

CLEANING

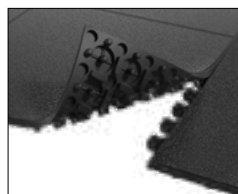
Simple cleaning of workstations by removing the mat; if applicable, use dry vacuum cleaner.



UPPER SIDE



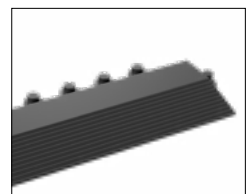
LOWER SIDE



CONNECTION



LOWER RAMPED PROFILE



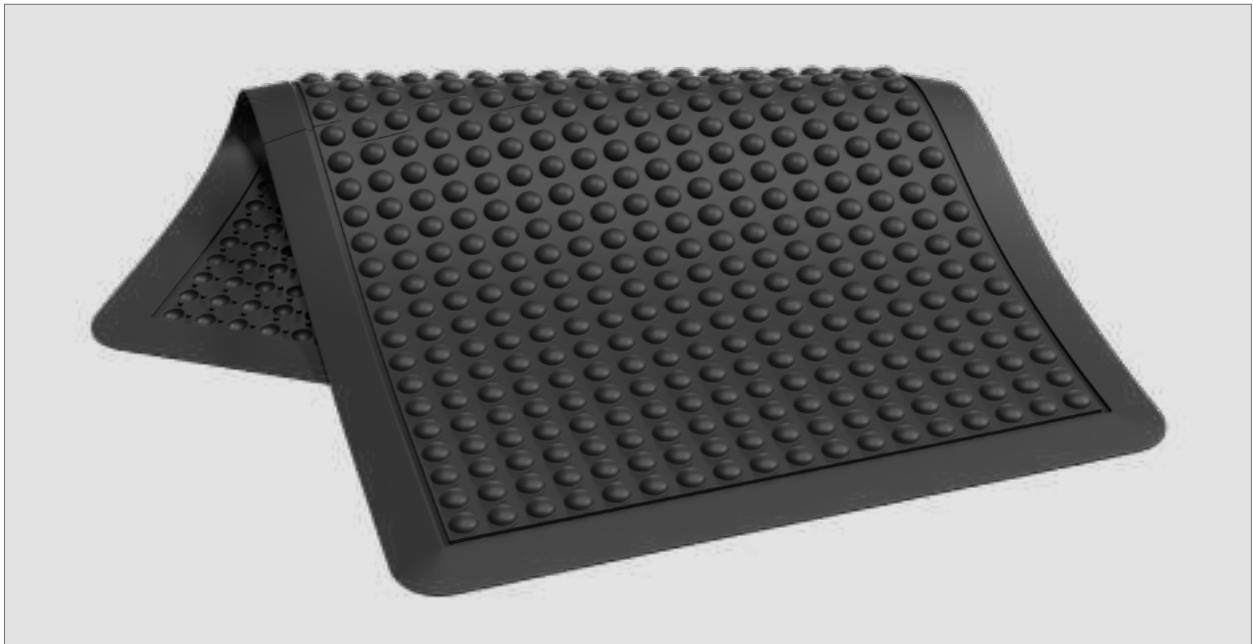
UPPER RAMPED PROFILE

2 NATURAL RUBBER WORKPLACE MATS

PUMA



ALSO AVAILABLE: PUMA EXTRA OIL-RESISTANT VARIANT (25% NBR AND 100% NBR)



APPLICATION AREA

PUMA: recommended for dry work areas like assembly areas, inspection points, receptions, sales or check-out points
 PUMA EXTRA: recommended for areas where oil, fat, chemicals, or acids are used

SPECIFICATIONS

- Material PUMA: natural rubber
- Material PUMA EXTRA: oil-resistant nitrile rubber (25% NBR and 100% NBR)
- Design: closed
- Height: ca. 14 mm
- Colour: black
- Ramped profile: ramped perimeter provides safe accessibility for people and vehicles
- Size / Weight:
 - Base plate: ca. 90 x 60 cm, ca. 4 kg / piece
 - Base plate: ca. 120 x 90 cm, ca. 7 kg / piece
 - Modular system: ca. 120 x 90 cm, ca. 7 kg / piece, available as centre piece (C) and end piece (B)

PROPERTIES

- Massaging studded surface ("bubbles")
- Slip-resistant, shock-absorbing, cold-resistant
- Reduces noise and vibration
- Easy to assemble or disassemble
- Accessible with hand trucks or trolleys thanks to ramped edges
- Easy to clean
- Recyclable

DURABILITY

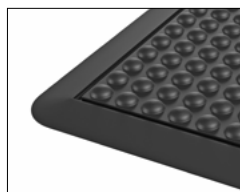
PUMA: All-purpose application (not in areas where oil, fat, chemicals, and acids are used)
 PUMA EXTRA: – nitrile rubber 25% NBR: oil-resistant heavy-duty variant for wet and oily industrial areas
 – nitrile rubber 100% NBR: extremely oil-resistant variant; resistant to most oils, fat types, chemicals, and acids; temperature-resistant up to 70° Celsius.

MODULAR SYSTEM

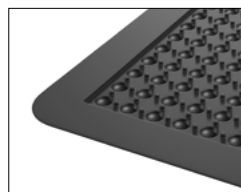
Available as base plate (A) and double end piece (B). The mat may be expanded according to customer requirements using additional centre pieces (C). Thanks to the modular system, PUMA mats can be seamlessly used with production lines.

CLEANING

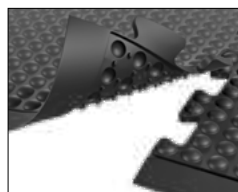
Simple cleaning of workstations by removing the mat; if applicable, use dry vacuum cleaner.



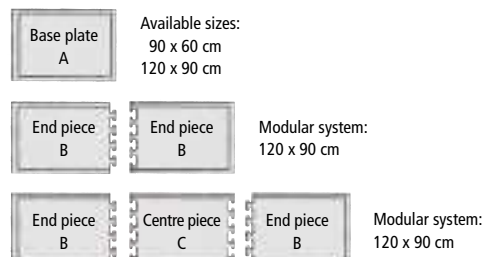
UPPER SIDE



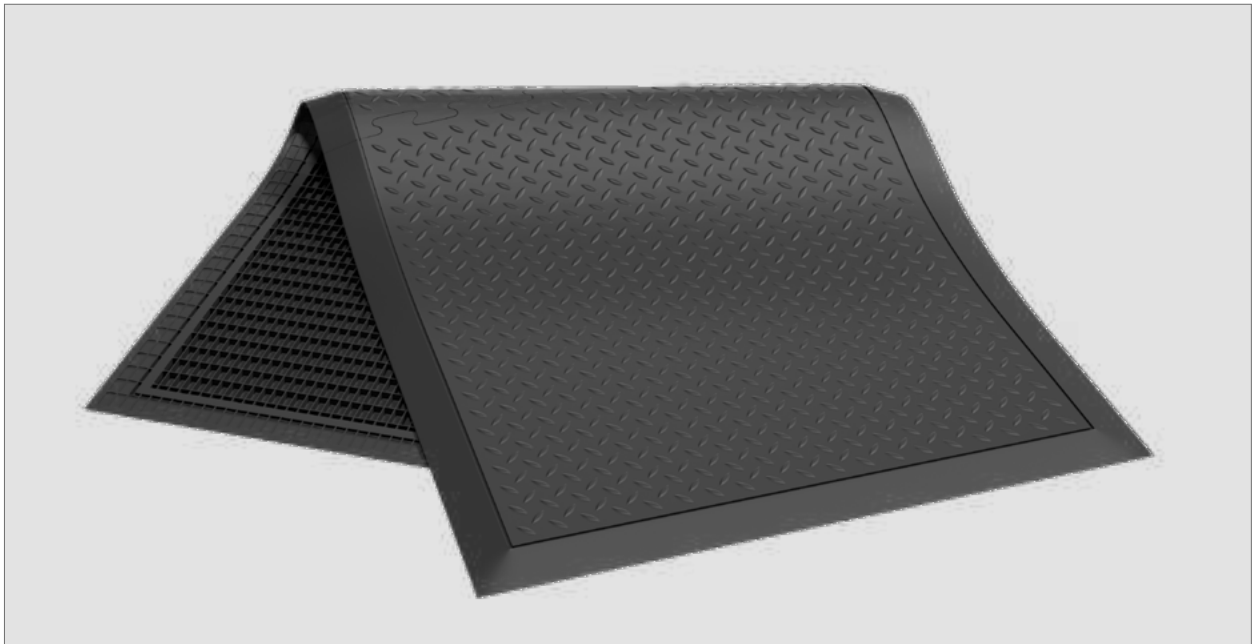
LOWER SIDE



CONNECTION



LUCHS



APPLICATION AREA

Multifunctional ergonomic mat for application in industrial areas (e.g. assembly)

SPECIFICATIONS

- Material: natural rubber
- Design: closed
- Height: ca. 14 mm
- Colour: black
- Ramped profile: ramped perimeter provides safe accessibility for people and vehicles
- Size / Weight:
 - Base plate: ca. 78 x 71 cm, ca. 4 kg / piece
 - Modular system: ca. 78 x 71 cm, ca. 4 kg / piece, available as centre piece (C) and end piece (B)

PROPERTIES

- Ergonomic design due to grooved plate surface
- Slip-resistant, shock-absorbing, cold-resistant, noise- and vibration-reducing
- Accessible with hand trucks or trolleys thanks to ramped edges
- Easy to assemble or disassemble
- Recyclable
- Mat is not resting directly on the floor due to tight underneath grid structure

DURABILITY

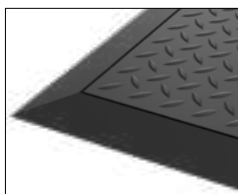
All-purpose application (not in areas where oil, fat, chemicals, and acids are used)

MODULAR SYSTEM

Available as base plate (A) and double end piece (B). The mat may be expanded according to customer requirements using additional centre pieces (C). Thanks to the modular system, LUCHS mats can be used with production lines without any difficulty.

CLEANING

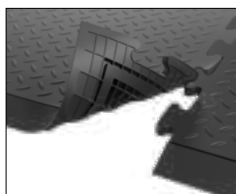
Simple cleaning of workstations by removing the mat; if applicable, use dry vacuum cleaner.



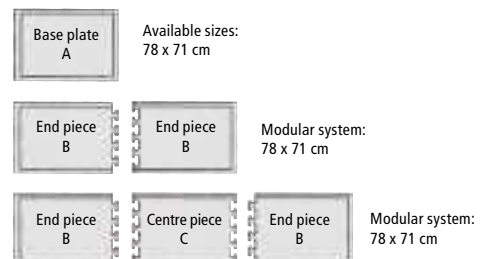
UPPER SIDE



LOWER SIDE

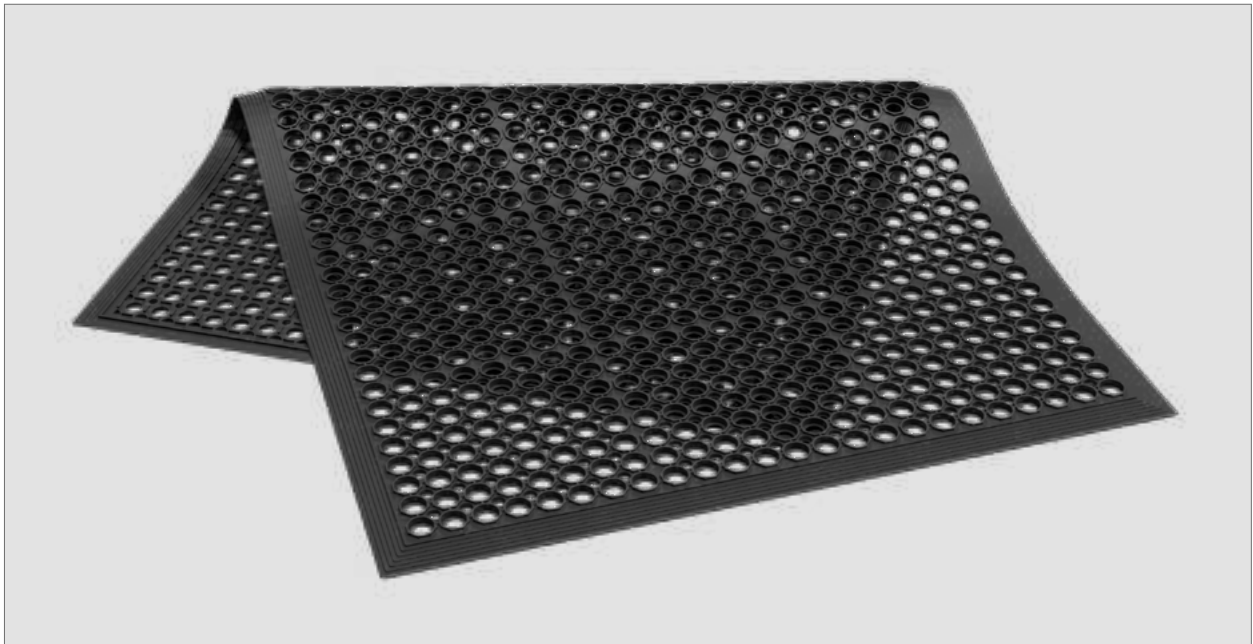


CONNECTION



2 NATURAL RUBBER WORKPLACE MATS

PANDA



APPLICATION AREA

Simple ergonomic mat with open structure for industry workplaces

SPECIFICATIONS

- Material: natural rubber
- Design: open
- Height: ca. 12 mm
- Colour: black
- Ramped profile: ramped perimeter provides safe accessibility for people and vehicles
- Size / Weight:
 - Base plate: ca. 153 x 91 cm, ca. 10 kg / piece
 - Modular system: ca. 153 x 91 cm, ca. 10 kg / piece, available as centre piece (C) and end piece (B)

PROPERTIES

- Fatigue-resistant
- Slip-resistant, shock-absorbing, cold-resistant
- Reduces noise
- Accessible with hand trucks or trolleys thanks to ramped edges
- Recyclable

DURABILITY

All-purpose application (not in areas where oil, fat, chemicals, and acids are used)

DIMENSIONS / WEIGHT

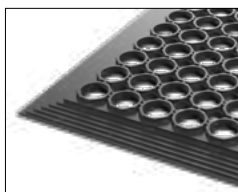
Base plate 153 x 91 cm, ca. 10 kg / piece

MODULAR SYSTEM

Available as base plate (A) and double end piece (B). The mat may be expanded according to customer requirements using additional centre pieces (C). Thanks to the modular system, PANDA mats can be used with production lines without any difficulty.

CLEANING

Simple cleaning of workstations by removing the mat; if applicable, use dry vacuum cleaner.



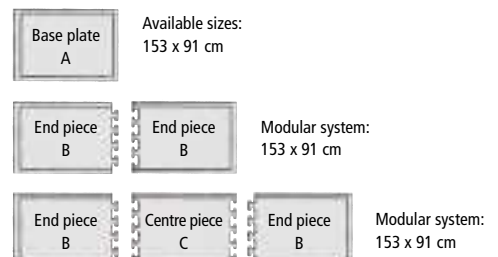
UPPER SIDE



LOWER SIDE



ROLLABLE



OKTOPUS



APPLICATION AREA

Simple ergonomic mat with closed structure for many industry workplaces

SPECIFICATIONS

- Material: natural rubber
- Design: closed
- Height: ca. 14 mm
- Colour: black
- Ramped profile: ramped perimeter provides safe accessibility for people and vehicles

PROPERTIES

- Slip-resistant, shock-absorbing, cold-resistant
- Reduces noise and vibrations
- All-purpose application
- Accessible with hand trucks or trolleys thanks to ramped edges
- Also available with yellow safety edges

DURABILITY

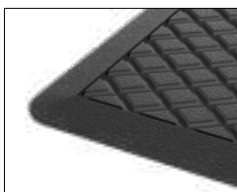
All-purpose application (not in areas where oil, fat, chemicals, and acids are used)

DIMENSIONS / WEIGHT

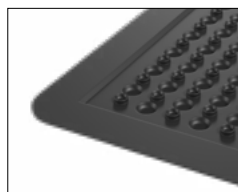
Base plate 120 x 90 cm, ca. 10 kg / piece
 Base plate 120 x 60 cm, ca. 3.8 kg / piece

CLEANING

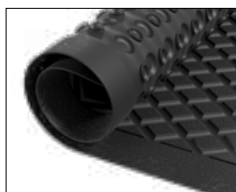
Simple cleaning of workstations by removing the mat; if applicable, use dry vacuum cleaner.



UPPER SIDE

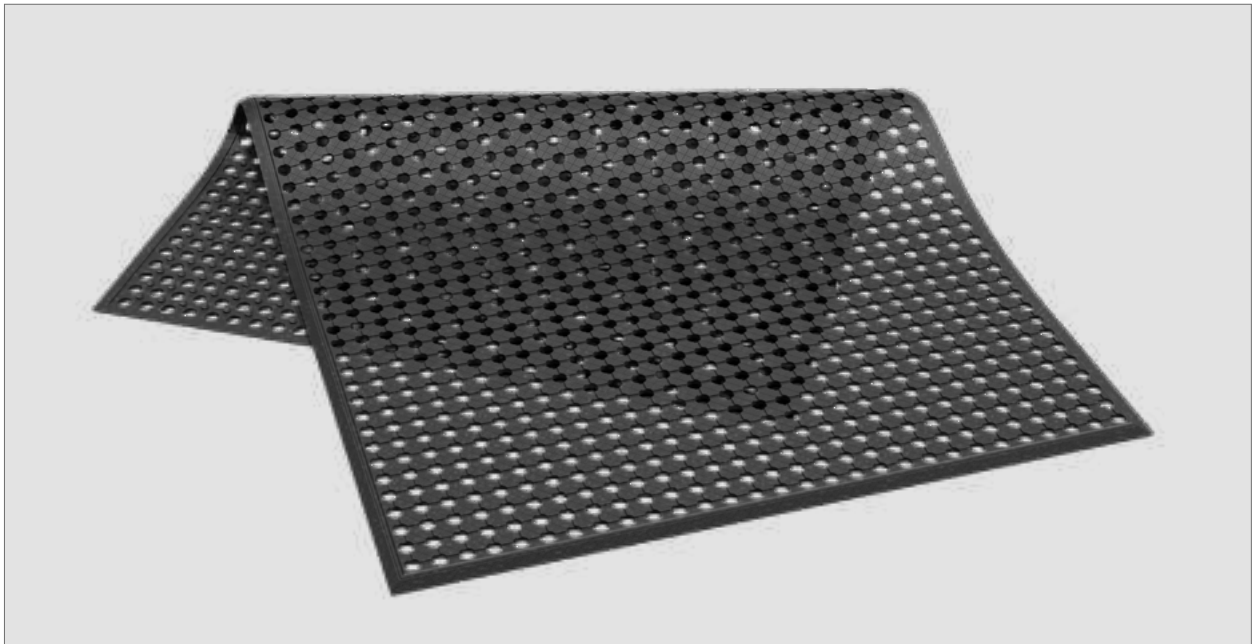


LOWER SIDE



ROLLABLE

GEKKO



APPLICATION AREA

Ideally suited for dry work areas, e.g. packing tables or wrapping counters

SPECIFICATIONS

- Material: natural rubber
- Design: open
- Height: ca. 10 mm
- Colour: black
- Ramped profile: ramped perimeter provides safe accessibility for people and vehicles

PROPERTIES

- Slip-resistant, shock-absorbing, cold-resistant
- Reduces noise and vibrations
- All-purpose application
- Accessible with hand trucks or trolleys thanks to ramped edges

DURABILITY

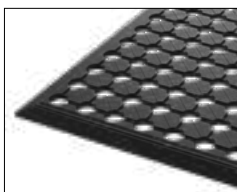
All-purpose application (not in areas where oil, fat, chemicals, and acids are used)

DIMENSIONS / WEIGHT

Base plate 150 x 90 cm, ca. 9.5 kg / piece

CLEANING

Simple cleaning of workstations by removing the mat; if applicable, use dry vacuum cleaner.



UPPER SIDE



LOWER SIDE



ROLLABLE



3

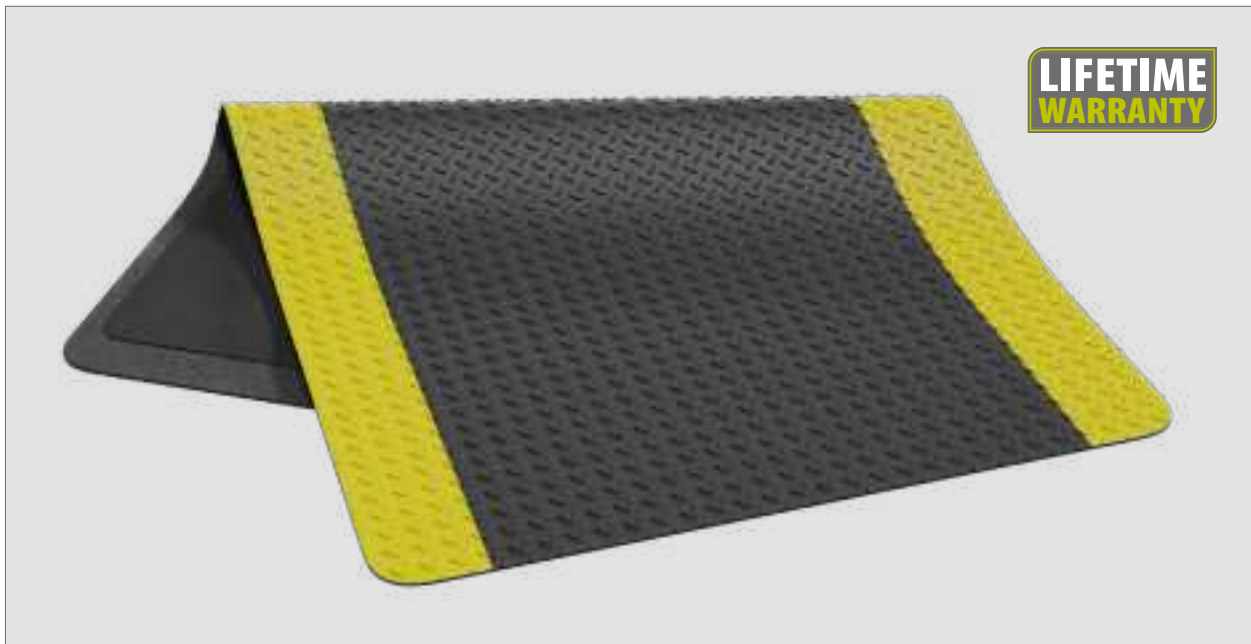
ALL-PURPOSE MATS

37 SALAMANDER

39 KOLIBRI



SALAMANDER



APPLICATION AREA

One-layer workstation mat with maximum grip made of high-compressed polyurethane for low to medium load in dry areas.

SPECIFICATIONS

- Material: PVC surface
- Design: closed
- Height: 14 mm
- Colour: black
- Yellow ramped edge to reduce risk of stumbling

PROPERTIES

- Chemically stable PVC surface
- Diamond plate pattern for increased grip
- Abrasion-resistant and weather-proof
- Ergonomic and durable

DURABILITY

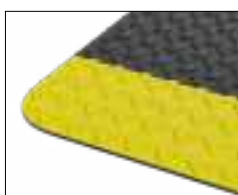
All-purpose use (not in areas where oil, fat, chemicals, and acids are used)

DIMENSIONS / WEIGHT

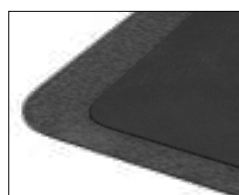
Roll: ca. 91 x 2.286 cm, ca. 126.0 kg.
 Regular size: ca. 91 x 61 cm, ca. 3.6 kg/piece,
 ca. 91 x 152 cm, ca. 9.0 kg/piece.
 Special length variants with 91 cm maximum width upon request

CLEANING

Simple cleaning of workstations by removing the mat



UPPER SIDE



LOWER SIDE



FURLED



KOLIBRI



APPLICATION AREA

Recommended for use in spa and pool areas, public buildings, commercial and industry buildings, ships, and private homes.

SPECIFICATIONS

- Material: PVC
- Design: open
- Height: ca. 12 mm
- Standard widths: 60 cm, 80 cm, 100 cm
- Maximum width: 2 meters; maximum length: 50 meters
- Weight: ca. 6 kg / m²
- Colours: black, white, grey, green, dark blue, light blue, red, orange, yellow, cream-coloured (combinations are available at an extra charge)
- Note: For technical reasons, slight deviations in colour may be expected
- Underneath strips: black

PROPERTIES

- All-side water drain (due to recessed underneath strips)

DURABILITY

Hygiene: Fungus resistant and resistant to bacteria due to water-repellent surface. Reduces sediment and algae. Largely resistant to chemicals

CLEANING

Spray-wash with water on a regular basis. Application of regular cleaning agents or high-pressure cleaners is also possible.



CHANGING ROOMS



SAUNAS



SWIMMING POOLS





GEGGUS®

GEGGUS GmbH
Höhefeldstraße 56-60
76356 Weingarten
GERMANY

Phone +49 7244 7055-0
Fax +49 7244 7055-80
E-mail info@geggus.de
Internet www.geggus.de